

# GUIDELINES FOR CONTRIBUTION OF ARTICLES TO ICJ PROFESSIONAL

## Preparation and submission

To prepare your articles, follow the guidelines below, and contact the Editor in case of any questions.

Submission of an article to the ICJ Professional will be taken to imply that it is original work (unpublished) and not being considered for publication elsewhere. Authors are responsible for obtaining permission to reproduce any material (including illustrations) for which they do not hold copyright. They are encouraged to use original images and in the absence of personal work adopt images from open access repositories, under creative common licence, and the like, and this information must be included in the captions, preferably with a link to the originating site. We recommend that the Author provides necessary credit and includes relevant source of information, across the article.

Points to be considered while preparing the **article on #BetterBuildingPractices**:

- The article should be in the range of 300 – 500 words
- Sections recommended:
  - Concept or Client brief
  - Engineering / Design (Refer point 13 in Main text)
  - Construction challenges (to be included for built projects)
  - Actions taken or implemented to mitigate challenges
  - Highlight unique proposition about the project (key differentiator about this project )
  - Highlight use of peculiar materials or construction technology (if any)
  - Awards or mention in publications (if any)
  - Team members (internal, external) eg: Structural, HVAC, Acoustics, Lighting consultants (optional)
  - Drawings and images
  - **Mandatory** : List 5 - 6 key take away highlighting #BetterBuildingPractices

## Sequence

- **Title** of the Article
- **Authors'** profile (limited to 75 words)
  1. Name
  2. Education

3. Professional work experience
  4. Specialisation
  5. Awards won, association with Publications
  6. Contact information: email id and mobile number
  7. Self-portrait image, high resolution >1 mb in jpeg format
- **Team members** (internal, external) eg: Structural, HVAC, Acoustics, Lighting consultants (optional)
  - **Abstract** of the article (single paragraph, limited to 100 words)
  - **Keywords** - list 4 - 5 relevant keywords
  - **Main text** :
    1. Client brief
    2. Engineer or Architect' concept
    3. Project size (in sq. ft.) and budget (INR Lakhs)
    4. Timeline (Start and end date in MM/YYYY format; Year of completion)
    5. Classification typology (mention the relevant typology):
 

<ul style="list-style-type: none"> <li>■ Individual homes</li> <li>■ Housing (multi-dwelling multi-floor)</li> <li>■ Offices</li> <li>■ Retail</li> <li>■ Hospital</li> <li>■ Educational</li> <li>■ Cultural</li> </ul>	<ul style="list-style-type: none"> <li>■ Government</li> <li>■ Sports</li> <li>■ Medical</li> <li>■ Master planning</li> <li>■ Infrastructure (railways, roadways, bridges)</li> </ul>
--------------------------------------------------------------------------------------------------------------------------------------------------------------------------------------------------------------------------	----------------------------------------------------------------------------------------------------------------------------------------------------------------------------------------
    6. Construction challenges
    7. Actions taken, implemented
    8. Highlight unique proposition about the project
    9. Highlight use of any peculiar materials or construction technology
    10. References (if any)
    11. **Mandatory** : List 5 - 6 key take away highlighting #BetterBuildingPractices
    12. **Conclusion**: *Mandatory to highlight better building practices. Do include awards won or mention in publication (if any)*
    13. Drawings and images

Support your article with relevant drawings and pictures, listed are few :

Details	Recommended	Mandatory
Plans	All levels	Ground Floor
Elevations	4	1
Sections	All	2
3D views	All	2
Pictures of the completed project	All available perspectives	2

## Categories

Your submission may be covered in different categories. The initial few categories we intend to showcase on the ICJ Professional are described below. Please do mention the category you wish your submission to be considered for.

### I. Projects

These are Author' own professional built / un-built works. It is important to note that in this category you may only submit personal, professionally undertaken works either individually or through your employer, references to be provided.

### II. Case studies

In this category, any inspirational construction / architecture anywhere in the world may be critically analysed for pros and all references need to be cited.

### III. Student work

In this category, we encourage students to submit their own individual or team works. In case of team work students must obtain consent of team members involved and give necessary credit by citing their full name.

### IV. Interviews of eminent construction professionals

The objective is to be inspired and to learn from their celebrated works as well as immense practical knowledge. Submissions to this category will assume interviewers' consent to publish their interview in the ICJ Professional. Students must include following information in Author's profile :

- Name of the University
- Year of study
- Describe the studio exercise

#### Sample questions:

- Please share with us your most celebrated works
- Unique aspect of these works

- Share with us how do these showcase #Betterbuildingpractices
- What in your opinion are examples of bad practices that are rampant in your line of work
- Share your ideas on how we can effectively advocate showcase #Betterbuildingpractices in India
- Include supporting drawings and images

## Review Process

- We are committed to bringing out quality content on #Betterbuildingpractices. We will not discriminate on the basis of individual biases. However, contributors should note the team will prioritize concrete constructions over alternative materials.
- Every article contributed will be reviewed by the panel of experts.
- Publishing will be at the panel' discretion, their decision will be binding and no disputes shall be entertained.

## We recommend use of

- Font size - 12 point and font type – Arial with double spacing.
- Numbering can be used for headings, if required.
- Single column, avoid using two columns or automatic paragraph numbering.
- Use bold face, italics, subscripts, superscripts wherever needed.
- The paragraphs should be spaced out. There should be at least one line space between paragraphs.
- Tables should be prepared in such a way that each parameter/ value should be entered in a separate cell. Table headings should be above the table, not below.
- All drawings, diagrams, graphs and images should be captioned as 'Figures' and numbered in proper sequence. Suitable captions should be given to all figures and pictures, images. Captions should be below the Figures, not above.
- The article should be divided into sections each having a main heading. Main headings should be all upper case bold; sub-headings could be Sentence case bold.
- If there are many notations/symbols in the article, they could be listed on page 2 under heading Notations. If there are only a few notations/symbols, they should be explained in the running text, as and when they appear.

## References

At the end of the article, under the heading of 'References', references should appear in the same sequence of their appearance in the main body of the paper. The format for references should be arranged in the manner which has been standardised for use in the journal. Thus, for books, thesis, bulletins, manuals, specifications and reports, the name and initials of the author are followed by the title of the book (in italics), the name of the publisher and their address, the year of publication, and the pages referred. Refer to the examples:

Preece B.W. and Davies J.W., *Models for Structural Concrete*, C.R. Books Limited, London, 1964, pp. 152-171.

Barnard P.R., *On the collapse of composite beams*, Thesis submitted to Cambridge, U.K. for PhD, University of Cambridge, 1963.

Bate S.C., *An experimental study of strands in prestressed concrete beams under static and repeated loading*, Proceedings of the Institution of Civil Engineers, December 1962, Vol. 23, pp. 625-638.

Scott J.P., *Loading tests on the prestressed concrete apron at British Airways, Gatwick Airport*, Paper presented at the FIP-PIARC symposium on prestressed concrete roads and airfield runways, Naples, 1962, Fédération Internationale de la Précontrainte, London.

Note that the titles of periodicals are not abbreviated.

## Pictures

Pictures, images used in the article should be sharp and clear, definitely high resolution and good quality.

Use high resolution good pictures to showcase various stages of the project

Colour drawings, diagrams and graphs accompanying the article should be neat and labelled clearly with units and its values should be clear. The lines and details of drawings, diagrams and graphs should be clear and distinct. Share with us excel sheets with data, used for creating graphs.

## Submission of the articles

Please share with us two word documents:

- First, original copy with all details for our records
- Second, masked copy for Review process. Please note this copy **should not** include any **details about the author**.

Mail these to:

editor@icjonline.com with a copy to icj@acclimited.com

## Annexure I:

Title: SAMPLE [Not complete]

Category: Project

Architect / Engineer Cadence

Location Bangalore, India

Design Team Narendra Pirgal, Smaran Mallesh, Vikram Rajashekar

Client Mr. Phalgun

Project size : Constructed Area 214 sqm | Area 111.5 m2

Timeline MM/YYYYY

Classification typography Individual Homes



Figure 1: Doloribu sandam vid molupisimi, expe pario esciis.



Figure 2: Doloribu sandam vid molupisimi, expe pario esciis.

The site was abutted by houses on two sides and flanked by low income housing on the other two sides.

A classic diagram of this would be the traditional courtyard house. Taking this classic diagram the architects moved the court to the corner to create new spacial and formal effects. By moving the court to the fourth quadrant of the square we could magnify the boundaries of each program flanking the court i.e. the living room, the dining and the bedrooms would not only feel much bigger but also would have sectional relationship with the open to sky court.

The court is further articulated by placing a sculptural element that would serve as an informal dining area as well as a tub housing a tree. The jali wall cast in-situ completes the fourth corner to accentuate the experience of the court.

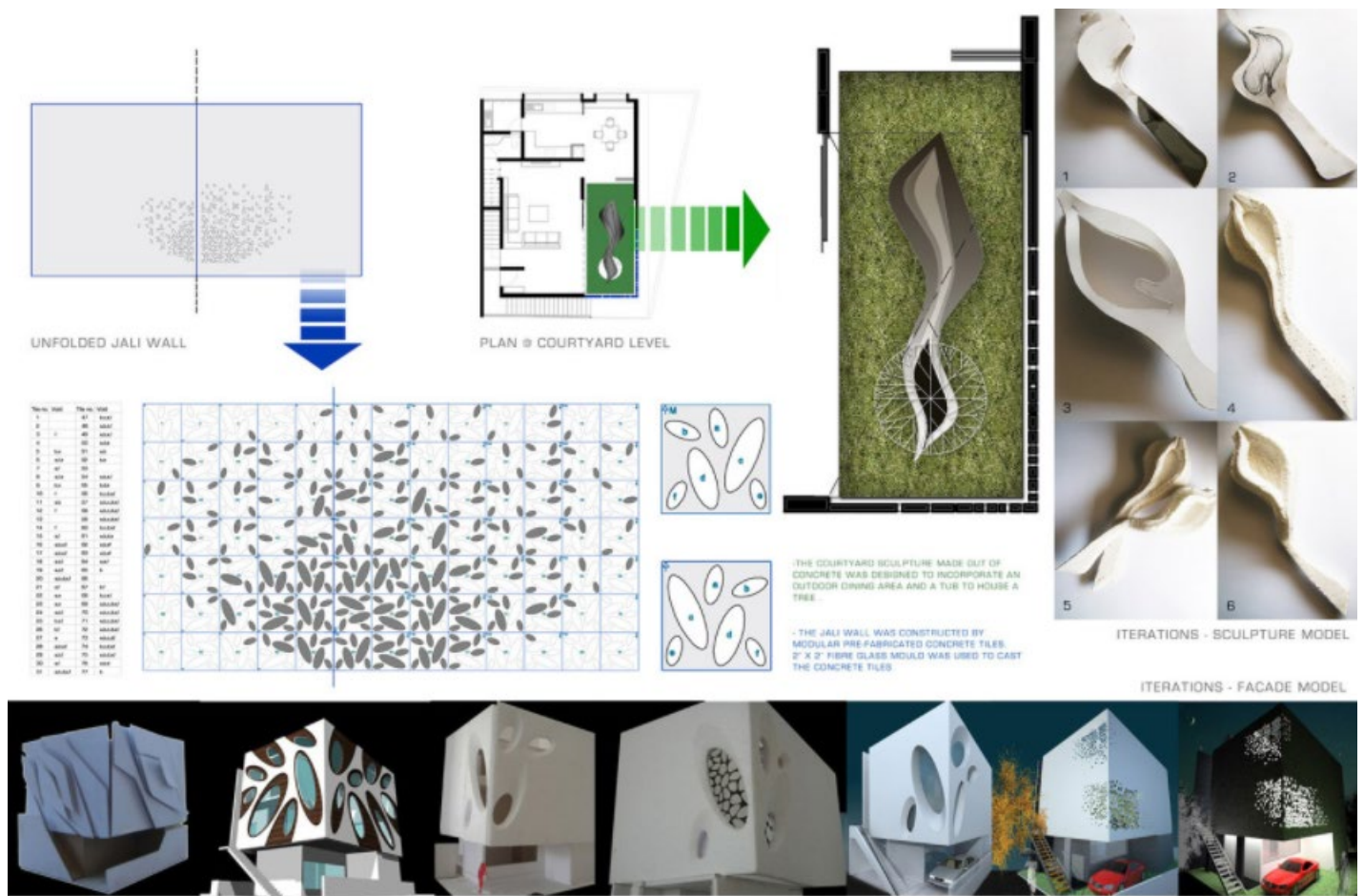


Figure 3: Doloribu sandam vid molupisimi, expe pario esciis.

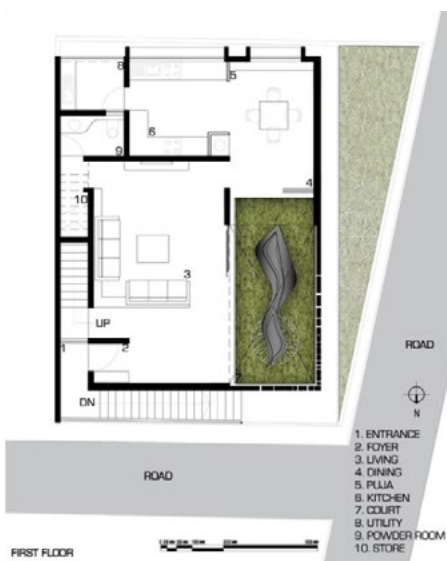


Figure 4: Doloribu sandam vid molupisimi, expe pario esciis.

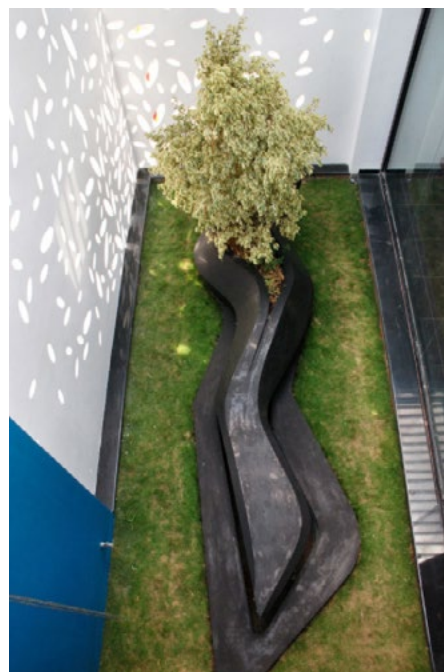


Figure 5: Doloribu sandam vid molupisimi, expe pario esciis.



Figure 6: Doloribu sandam vid molupisimi, expe pario esciis.