

# Spotlight on Speciality Admixtures

## Fosroc — Strength in quality

Fosroc Chemicals (India) Limited, is the Indian operation of Fosroc International Ltd., U K, a part of B P Amoco, a lubricant and speciality chemical giant with worldwide operations. It is the first multinational construction chemicals company to start its operation in India way back in 1981. Since then, it has been introducing quality products into the Indian market. Apart from providing traditional expertise in concrete admixtures, Fosroc also provides chemical products for industrial flooring, repair and protection, grouts and anchors.

### Conplast SP430A1 - Superplasticising admixture

Fosroc offers *Conplast SP430A1*, a superplasticising admixture for producing pumpable concrete with high workability requiring very little vibration during placing. Addition of *Conplast SP430A1* also produces high strength, high grade concrete of M 40 and above by substantial reduction in the quantity of water, resulting in high early strength and low permeability. It complies with IS 9103 : 1999, BS:5075 Part 3 and ASTM C 494 Type G admixture.

It is chloride-free and hence safe for use in prestressed concrete. It is also compatible

special additives and is supplied as a brown liquid instantly dispersible in water. It is specially formulated to give high water reductions upto 25 percent without loss of workability to achieve long term durability.

*Conplast* has been successfully used in the construction of:

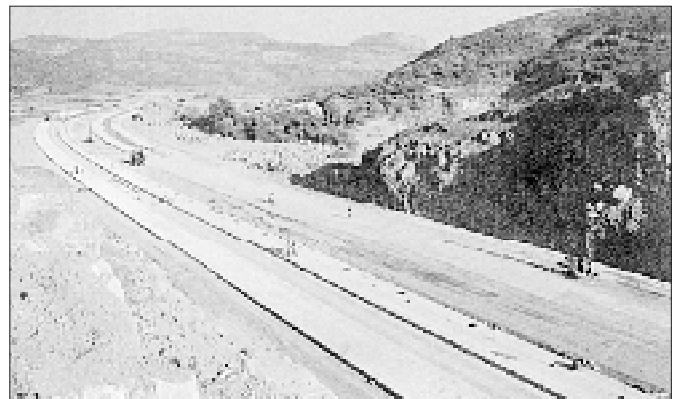
- Mumbai-Pune expressway,
- Jammu-Udhampur Rail link,
- Hydel projects of Karnataka Power Corporation Ltd, etc.
- Housing complexes and many more structures.

Fosroc India ensures that a comprehensive sales and technical support is always available to their customers anywhere in the country.

The company has a team of specially trained applicators who can execute large application jobs, trained engineers and sales staff to oversee the execution of the work. There is close association with the consultants and the clients right at the specification stage to offer product support and advice. The supply chain consists of a countrywide network of stockists.



The Jammu-Udhampur Rail Link project



The Mumbai-Pune expressway

with normal and sulphate-resistant cements and marine aggregates. Addition of *Conplast SP430A1* makes denser, close textured concrete with reduced porosity and hence concrete becomes more durable. The risk of segregation and bleeding can be minimised with the addition of *Conplast SP430A1*. *Conplast SP430A1* is based on sulphonated naphthalene polymers and

It is available in 5, 20 and 200 l containers.

Fosroc India has two 'state of the art' manufacturing facilities, one in Bangalore and another in Ankleshwar. It has its corporate office and southern regional office in Bangalore and other regional offices at Mumbai, Delhi and Kolkata.

For more details, please contact:

The Head of Marketing  
Fosroc Chemicals (India) Pvt. Ltd.  
Hafeeza Chamber, II Floor  
111/3 K H Road  
Bangalore 560 027  
Tel: (080) 2225495/2240120  
E-mail: [cmo@fosrocindia.com](mailto:cmo@fosrocindia.com)